

Command Mobile Module

External Switch Setup

February 2020



MobileCollect Wireless

MICRO RIDGE

*Measurement Collection Specialists
Connect Any Gage into Any Software*

Overview

- Setup instructions to use an external switch to request a gage reading through a Command Mobile Module transmitter (CMM)
- Instructions compatible with:
 - CMM with RM2.4 radio (2018-present)
 - CMM with ATZB radio (2010-2018)



MobileCollect Wireless

MICRORIDGE

**Measurement Collection Specialists
Connect Any Gage into Any Software**

Compatible Devices

- Receivers



USB Base



RS-232/USB Base



Wedge/USB Base

- External Switch



Foot switch



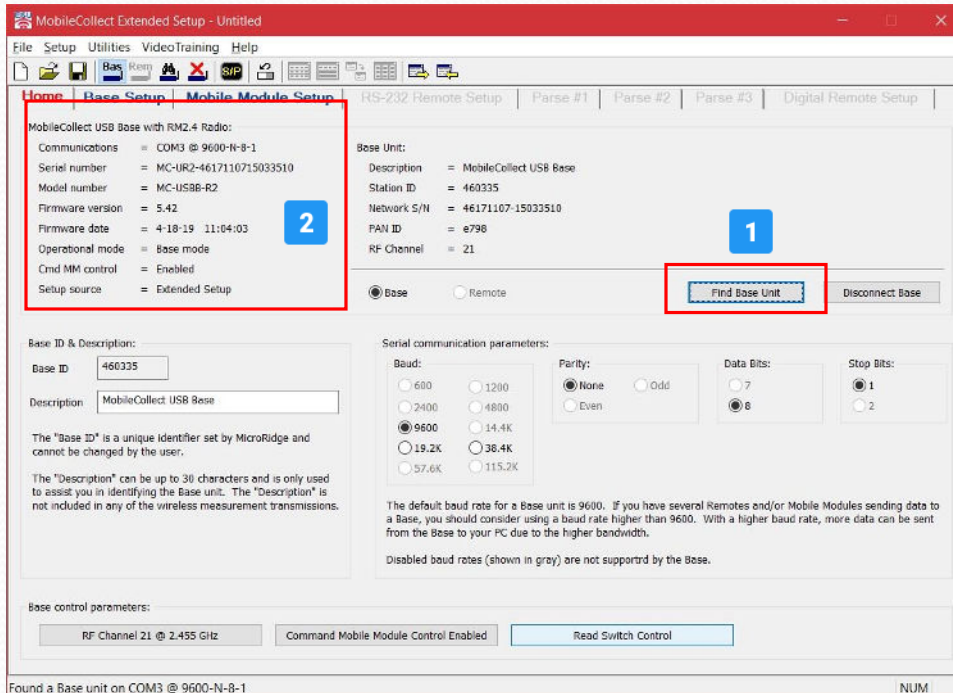
Hand switch

MobileCollect Wireless

MICRORIDGE

*Measurement Collection Specialists
Connect Any Gage into Any Software*

Find Base



Open the **MobileCollect Extended Setup** program

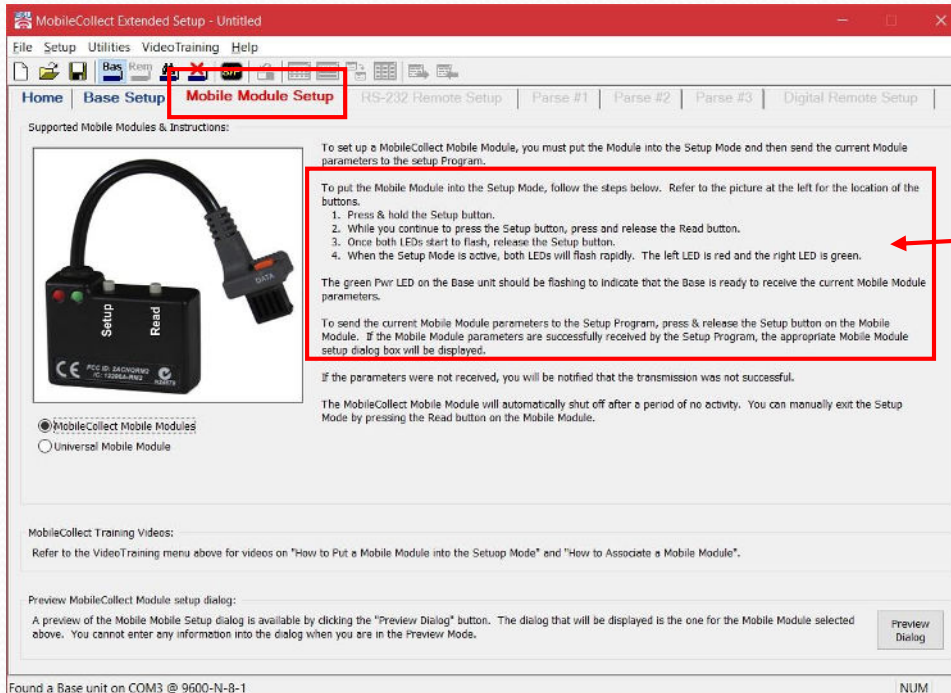
1. Click on “Find Base Unit” button
2. Base information displays in upper left corner

MobileCollect Wireless

MICRO RIDGE

**Measurement Collection Specialists
Connect Any Gage into Any Software**

Setup Mode



Select **Mobile Module Setup** tab

• Do the association button sequence

- Press & hold Setup button
- Press & release Read button
- Release Setup button
- When LEDs flash quickly, press & release Setup button

MobileCollect Wireless

MICRO RIDGE

**Measurement Collection Specialists
Connect Any Gage into Any Software**

Not Associated Message

Configure MobileCollect Command Mobile Module

Current Command Mobile Module parameters:

Module ID = A75416	Serial number = MC-C2R-A717100711541610	Target Base ID = 7A0911
Module label = A75416	Model number = MC-CMM-R2	PAN ID = 3301
Read mode = Single	Firmware version = 5.18	Base Network S/N = 7a180308-16091110
Battery voltage = 3.08/3.08	Firmware date = 4-18-19 12:38:24	Module RF Channel = 21
Radio type = RM2.4	Network S/N = a7171007-11541610	Base RF Channel = 21
	Gage type = Mitutoyo output	

The Mobile Module is not associated with the current Base unit.

User definable Command Mobile Module parameters:

Module label: A75416 (maximum 8 characters)

Description: Command Mobile Module

Read mode: Single Read with Button Press

RF channel: Channel 21 @ 2.455 GHz

Command: Command Mobile Module State = Active

Command Mobile Module base association:

Target Base ID: 7A0911 PAN ID: 3301

Base Network S/N: 7a180308-16091110 RF Channel: 21

Do not change current Mobile Module association
 Remove the Mobile Module association
 Associate with Base unit connected to this setup program
 Associate with another Base unit

Instructions:

The Mobile Module must be in the setup mode in order to receive updates from this dialog.

- Press and hold the Setup button on the Mobile Module.
- Press and release the Read button.
- Once both LEDs start to flash release the Setup button.
- When the Mobile Module is in the setup mode, both LEDs will flash every 300 msec (0.3 seconds).

You can change the Mobile Module parameters even if the Module is not associated with the current Base.

The Mobile Module will automatically exit the setup mode after 60 seconds of no activity.

- If the transmitter is not associated (linked) to this Base receiver, you will see the **RED** message

MobileCollect Wireless

MICRO RIDGE

**Measurement Collection Specialists
Connect Any Gage into Any Software**

Select Receiver

Configure MobileCollect Command Mobile Module

Current Command Mobile Module parameters:

Module ID	= A75416	Serial number	= MC-C2R-A717100711541610	Target Base ID	= 7A0911
Module label	= A75416	Model number	= MC-CMM-R2	PAN ID	= 3301
Read mode	= Single	Firmware version	= 5.18	Base Network S/N	= 7a180308-16091110
Battery voltage	= 3.08/3.08	Firmware date	= 4-18-19 12:38:24	Module RF Channel	= 21
Radio type	= RM2.4	Network S/N	= a7171007-11541610	Base RF Channel	= 21
		Gage type	= Mitutoyo output		

The Mobile Module is not associated with the current Base unit.

User definable Command Mobile Module parameters:

Module label: A75416 (maximum 8 characters)
Description: Command Mobile Module
Read mode: Single Read with Button Press
RF channel: Channel 21 @ 2.455 GHz
Command: Command Mobile Module State = Active

Command Mobile Module base association:

Target Base ID: 460335 PAN ID: e798
Base Network S/N: 46171107-15033510 RF Channel: 21

Do not change current Mobile Module association
 Remove the Mobile Module association
 Associate with Base unit connected to this setup program **1**
 Associate with another Base unit Select Base Unit

Instructions:

The Mobile Module must be in the setup mode in order to receive updates from this dialog.

- Press and hold the Setup button on the Mobile Module.
- Press and release the Read button.
- Once both LEDs start to flash release the Setup button.
- When the Mobile Module is in the setup mode, both LEDs will flash every 300 msec (0.3 seconds).

You can change the Mobile Module parameters even if the Module is not associated with the current Base.

The Mobile Module will automatically exit the setup mode after 60 seconds of no activity.

2 Send Setup to Mobile Module
Close

1. To complete association with this receiver, select “Associate with Base unit connected to this Setup program” option
2. Press “Send Setup to Mobile Module” button

MobileCollect Wireless

MICRORIDGE

**Measurement Collection Specialists
Connect Any Gage into Any Software**

CMM Associated

Configure MobileCollect Command Mobile Module

Current Command Mobile Module parameters:

Module ID	= A75416	Serial number	= MC-C2R-A717100711541610	Target Base ID	= 460335
Module label	= A75416	Model number	= MC-CMM-R2	PAN ID	= e798
Read mode	= Single	Firmware version	= 5.18	Base Network S/N	= 46171107-15033510
Battery voltage	= 3.08/3.08	Firmware date	= 4-18-19 12:38:24	Module RF Channel	= 21
Radio type	= RM2.4	Network S/N	= a7171007-11541610	Base RF Channel	= 21
		Gage type	= Mitutoyo output		

The Mobile Module is associated with Base unit connected to this setup program.

User definable Command Mobile Module parameters:

Module label: A75416 (maximum 8 characters)

Description: Command Mobile Module

Read mode: Single Read with Button Press

RF channel: Channel 21 @ 2.455 GHz

Command: Command Mobile Module State = Active

Command Mobile Module base association:

Target Base ID: 460335 PAN ID: e798

Base Network S/N: 46171107-15033510 RF Channel: 21

Do not change current Mobile Module association
 Remove the Mobile Module association
 Associate with Base unit connected to this setup program
 Associate with another Base unit

Instructions:

The Mobile Module must be in the setup mode in order to receive updates from this dialog.

- Press and hold the Setup button on the Mobile Module.
- Press and release the Read button.
- Once both LEDs start to flash release the Setup button.
- When the Mobile Module is in the setup mode, both LEDs will flash every 300 msec (0.3 seconds).

You can change the Mobile Module parameters even if the Module is not associated with the current Base.

The Mobile Module will automatically exit the setup mode after 60 seconds of no activity.

- Message changes and text is now GREEN
- The Command Mobile Module is associated to the Base receiver

MobileCollect Wireless

MICRORIDGE

**Measurement Collection Specialists
Connect Any Gage into Any Software**

Command Function

Configure MobileCollect Command Mobile Module

Current Command Mobile Module parameters:

Module ID = A75416	Serial number = MC-C2R-A717100711541610	Target Base ID = 460335
Module label = A75416	Model number = MC-CMM-R2	PAN ID = e798
Read mode = Single	Firmware version = 5.18	Base Network S/N = 46171107-15033510
Battery voltage = 3.08/3.08	Firmware date = 4-18-19 12:38:24	Module RF Channel = 21
Radio type = RM2.4	Network S/N = a7171007-11541610	Base RF Channel = 21
	Gage type = Mitutoyo output	

The Mobile Module is associated with Base unit connected to this setup program.

User definable Command Mobile Module parameters:

Module label: A75416 (maximum 8 characters)

Description: Command Mobile Module

Read mode: Single Read with Button Press

RF channel: Channel 21 @ 2.455 GHz

Command: **Command Function is Disabled**

Command Mobile Module base association:

Target Base ID: 460335 PAN ID: e798

Base Network S/N: 46171107-15033510 RF Channel: 21

Do not change current Mobile Module association
 Remove the Mobile Module association
 Associate with Base unit connected to this setup program
 Associate with another Base unit

Instructions:

The Mobile Module must be in the setup mode in order to receive updates from this dialog.

- Press and hold the Setup button on the Mobile Module.
- Press and release the Read button.
- Once both LEDs start to flash release the Setup button.
- When the Mobile Module is in the setup mode, both LEDs will flash every 300 msec (0.3 seconds).

You can change the Mobile Module parameters even if the Module is not associated with the current Base.

The Mobile Module will automatically exit the setup mode after 60 seconds of no activity.

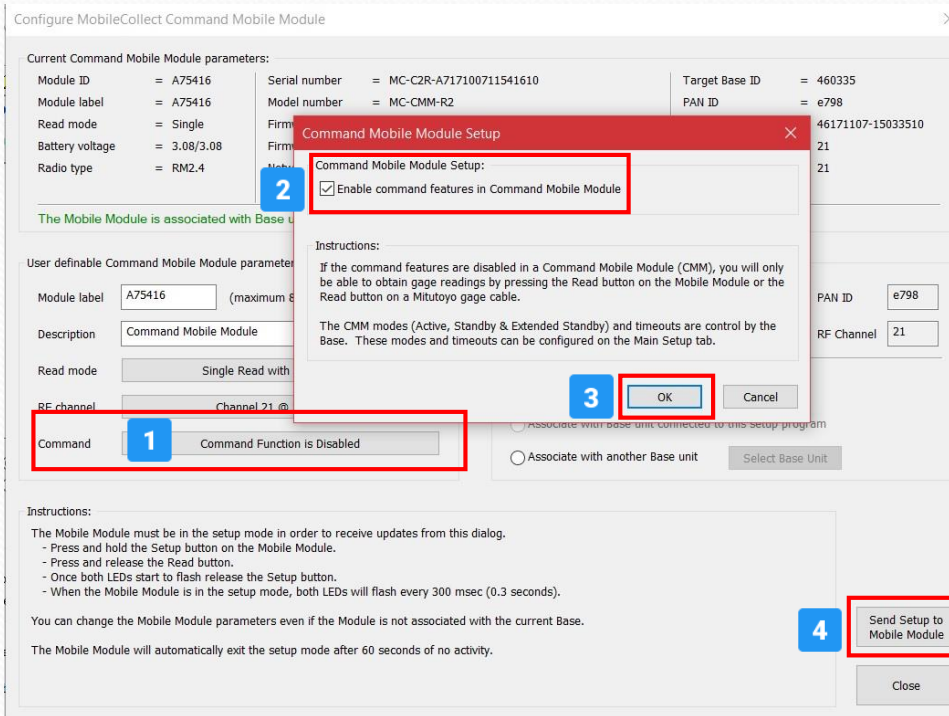
- Command mode must be active to transfer data with external switch
- If “**Command Function is Disabled**” is displayed, you will need to enable the Command mode feature – see following slide

MobileCollect Wireless

MICRO RIDGE

**Measurement Collection Specialists
Connect Any Gage into Any Software**

Enable Command Mode



1. Press the Command mode button
 - Opens **Command Mobile Module Setup**
2. Check box “**Enable command features in CMM**”.
3. Click “**OK**”
4. Press “**Send Setup to Mobile Module**”

MobileCollect Wireless

MICRORIDGE

**Measurement Collection Specialists
Connect Any Gage into Any Software**

Module ID

Configure MobileCollect Command Mobile Module

Current Command Mobile Module parameters:

Module ID = A75416	Serial number = MC-C2R-A717100711541610	Target Base ID = 460335
Module label = A75416	Model number = MC-CMM-R2	PAN ID = e798
Read mode = Single	Firmware version = 5.18	Base Network S/N = 46171107-15033510
Battery voltage = 3.08/3.08	Firmware date = 4-18-19 12:38:24	Module RF Channel = 21
Radio type = RM2.4	Network S/N = a7171007-11541610	Base RF Channel = 21
	Gage type = Mitutoyo output	

The Mobile Module is associated with Base unit connected to this setup program.

User definable Command Mobile Module parameters:

Module label: A75416 (maximum 8 characters)

Description: Command Mobile Module

Read mode: Single Read with Button Press

RF channel: Channel 21 @ 2.455 GHz

Command: Command Mobile Module State = Active

Command Mobile Module base association:

Target Base ID: 460335

PAN ID: e798

Base Network S/N: 46171107-15033510

RF Channel: 21

Do not change current Mobile Module association
 Remove the Mobile Module association
 Associate with Base unit connected to this setup program
 Associate with another Base unit

Instructions:

The Mobile Module must be in the setup mode in order to receive updates from this dialog.

- Press and hold the Setup button on the Mobile Module.
- Press and release the Read button.
- Once both LEDs start to flash release the Setup button.
- When the Mobile Module is in the setup mode, both LEDs will flash every 300 msec (0.3 seconds).

You can change the Mobile Module parameters even if the Module is not associated with the current Base.

The Mobile Module will automatically exit the setup mode after 60 seconds of no activity.

- Note your CMM Module ID number, it is needed to complete the setup
 - This module ID is **A75416**
- Click “Close” button

MobileCollect Wireless

MICRORIDGE

**Measurement Collection Specialists
Connect Any Gage into Any Software**

Module ID Channel

MobileCollect Extended Setup - Untitled

File Setup Utilities VideoTraining Help

Home **Base Setup** Mobile Module Setup RS-232 Remote Setup Parse #1 Parse #2 Parse #3 Digital Remote Setup

Chan	Chan Active	Module Type	Module ID	Meas Format	Text Field	Delimiter Char	Chan 00 to 30	Chan A to Z	Text Field	Module ID	Module Label	Units	Battery Status	Signal Strength	TxD Attempt	EOP Char
Global	Yes	All		Pass		(Comma)										[CR]
1	Yes	Mobile		Pass		(Comma)										[CR]
2	Yes	Mobile		Pass		(Comma)										[CR]
3	Yes	Mobile		Pass		(Comma)										[CR]
4	Yes	Mobile		Pass		(Comma)										[CR]
5	Yes	Mobile		Pass		(Comma)										[CR]
6	Yes	Mobile		Pass		(Comma)										[CR]
7	Yes	Mobile		Pass		(Comma)										[CR]
8	Yes	Mobile		Pass		(Comma)										[CR]
9	Yes	Mobile		Pass		(Comma)										[CR]
10	Yes	Mobile		Pass		(Comma)										[CR]
11	No	Mobile		Pass		(Comma)										[CR]
12	No	Mobile		Pass		(Comma)										[CR]
13	No	Mobile		Pass		(Comma)										[CR]
14	No	Mobile		Pass		(Comma)										[CR]
15	No	Mobile		Pass		(Comma)										[CR]

Disabled channels and cells that cannot be modified are displayed with a light red background. To move rows, select rows in Chan column and drag with left mouse button pressed.

Output formats:
Use settings in above grid [v] Reset Grid

Sample output for current channel (Measurement value = 3.5795):
3.5795(CR)

Instructions for channel grid:
Channel active or inactive. If you set this field to "No", no measurement data will be accepted for this channel and you will not be able to modify any of the fields for this channel.
N (No) = Channel is inactive and no measurement data will be accepted.
Y (Yes) = Channel is active and data will be accepted.
The Global channel can only receive data from Mobile Modules.

Found a Base unit on COM3 @ 9600-N-8-1 NUM

Base Setup tab

- Module ID column
- Select the first available row below the Global Channel.
 - Using Channel 1 in this example

MobileCollect Wireless

MICRORIDGE

Measurement Collection Specialists
Connect Any Gage into Any Software

Mobile Module ID

MobileCollect Extended Setup - Untitled

File Setup Utilities VideoTraining Help

Home Base Setup Mobile Module Setup RS-232 Remote Setup Parse #1 Parse #2 Parse #3 Digital Remote Setup

Chan	Chan Active	Module Type	Module ID	Meas Format	Text Field	Delimiter	Chan	Chan	Text	Module ID	Module Label	Units	Battery Status	Signal Strength	TxD Attempt	EOP Char
Global	Yes	All		Pass		(Comma)	00 to 30	A to Z	Field							(CR)
1	Yes	Mobile		Pass		(Comma)										(CR)
2	Yes	Mobile		Pass		(Comma)										(CR)
3	Yes	Mobile		Pass		(Comma)										(CR)
4	Yes	Mobile		Pass		(Comma)										(CR)

Mobile Module ID Selection

Module ID	Module Type	Module Label	Description	RF Chan	Serial Number
084712	MobileCollect Mini	084712	Mini Mobile Module	21	MC-M3R-0817100515471210
284716	MobileCollect Mini		Mini Mobile Module	21	MC-M3R-2817100706471610
404327	MobileCollect Mini	404327	Mini Mobile Module	21	MC-M3R-0018100815432710
681340	MobileCollect Mini	681340	Mini Mobile Module	21	MC-M3R-6818062910134010
8E481F	MobileCollect Mini	Calper	Mini Mobile Module	21	MC-XMM-8E0900151C481F01
AS1997	MobileCollect Command	AS1997	Command Mobile Module	21	MC-CMM-AS00001388199701
A75416	MobileCollect Command	A75416	Command Mobile Module	21	MC-C2R-A717100711541610
AA0910	MobileCollect Mini	AA0910	Mini Mobile Module	21	MC-M3R-AA18042006091010
D43557	MobileCollect Mini	D43557	Mini Mobile Module	21	MC-M3R-D418030606355710
EA2303	MobileCollect Mini	EA2303	Mini Mobile Module	21	MC-M3R-EA17101206230310
FC37C2	MobileCollect RS-232	FC37C2	RS-232 Mobile Module	21	MC-RMM-FC0000124037C201

Select the Module ID by pressing the Select button or double-click the desired Module ID in the list.

To delete a Module ID, select the item to delete and press the Delete button. If you check "Enable multiple selections", you can use the Shift or Ctrl keys with the left mouse button to select multiple items for deletion.

Click on a column header to sort the list.

Enable multiple selections

Delete
Select
Cancel

- Right click in the Channel 1 "Module ID" box
 - Yellow highlighted box
- The Mobile Module ID Selection box appears

MobileCollect Wireless

MICRORIDGE

Measurement Collection Specialists
Connect Any Gage into Any Software

Select Module ID

1

Module ID	Module Type	Module Label	Description	RF Chan	Serial Number
084712	MobileCollect Mini	084712	Mini Mobile Module	21	MC-M3R-0817100515471210
284716	MobileCollect Mini		Mini Mobile Module	21	MC-M3R-2817100706471610
404327	MobileCollect Mini	404327	Mini Mobile Module	21	MC-M3R-4018100815432710
6B1340	MobileCollect Mini	6B1340	Mini Mobile Module	21	MC-M3R-6B18062910134010
8E4B1F	MobileCollect Mini	Caliper	Mini Mobile Module	21	MC-XMM-8E0000151C4B1F01
A51997	MobileCollect Command	A51997	Command Mobile Module	21	MC-CMM-A5000013B8199701
A75416	MobileCollect Command	A75416	Command Mobile Module	21	MC-C2R-A717100711541610
AA0910	MobileCollect Mini	AA0910	Mini Mobile Module	21	MC-M3R-AA18042006091010
D43557	MobileCollect Mini	D43557	Mini Mobile Module	21	MC-M3R-D418030606355710
EA2303	MobileCollect Mini	EA2303	Mini Mobile Module	21	MC-M3R-EA17101206230310
FC37C2	MobileCollect RS-232	FC37C2	RS-232 Mobile Module	21	MC-RMM-FC00001124037C201

2

1. Select row with your Command Mobile Module ID
2. Click on the **Select** button.

MobileCollect Wireless

MICRORIDGE

**Measurement Collection Specialists
Connect Any Gage into Any Software**

Module ID Input

MobileCollect Extended Setup - Untitled

File Setup Utilities VideoTraining Help

Home Base Setup Mobile Module Setup RS-232 Remote Setup Parse #1 Parse #2 Parse #3 Digital Remote Setup

Chan	Chan Active	Module Type	Module ID	Meas Format	Text Field	Delimiter Char	Chan ID	Text Field	Module ID	Module Label	Units	Battery Status	Signal Strength	TxD Attempt	EOP Char
Global	Yes	All		Pass		(Comma)									[CR]
1	Yes	Mobile	A75416	Pass		(Comma)									[CR]
2	Yes	Mobile		Pass		(Comma)									[CR]
3	Yes	Mobile		Pass		(Comma)									[CR]
4	Yes	Mobile		Pass		(Comma)									[CR]
5	Yes	Mobile		Pass		(Comma)									[CR]
6	Yes	Mobile		Pass		(Comma)									[CR]
7	Yes	Mobile		Pass		(Comma)									[CR]
8	Yes	Mobile		Pass		(Comma)									[CR]
9	Yes	Mobile		Pass		(Comma)									[CR]
10	Yes	Mobile		Pass		(Comma)									[CR]
11	No	Mobile		Pass		(Comma)									[CR]
12	No	Mobile		Pass		(Comma)									[CR]
13	No	Mobile		Pass		(Comma)									[CR]
14	No	Mobile		Pass		(Comma)									[CR]
15	No	Mobile		Pass		(Comma)									[CR]

Send to Host Computer Before (B) or After (A) Measurement

Disabled channels and cells that cannot be modified are displayed with a light red background. To move rows, select rows in Chan column and drag with left mouse button pressed.

Output formats:
Use settings in above grid [v] Reset Grid

Sample output for current channel (Measurement value = 3.5795):
3.5795(CR)

Instructions for channel grid:
Name of the Mobile Module associated with this channel.
Right-click in this cell to access the ID's of the Mobile Modules that have been configured on this computer.

Found a Base unit on COM3 @ 9600-N-8-1 NUM

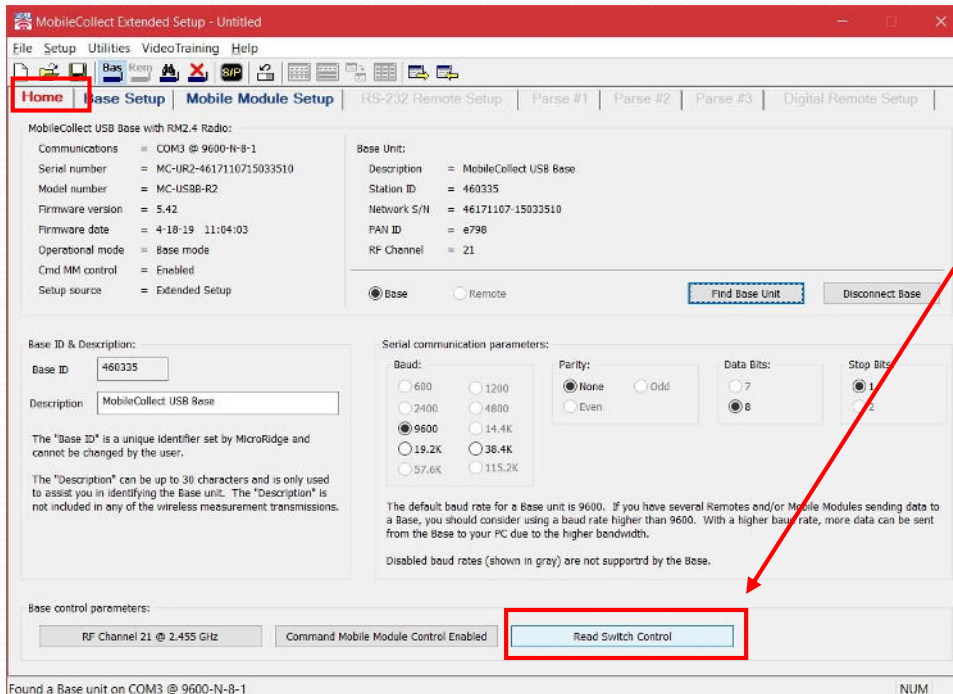
- The Module ID displays in the selected row
- The Base Setup screen is also used to add other fields to the gage output, such as:
 - Module ID
 - Module Label
 - Channel ID

MobileCollect Wireless

MICRORIDGE

**Measurement Collection Specialists
Connect Any Gage into Any Software**

Read Switch Control



Home tab

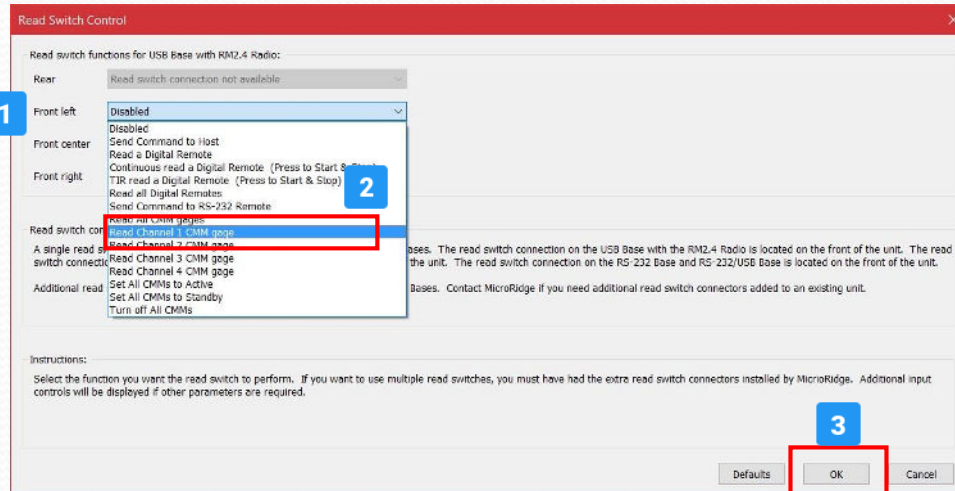
- Select the Read Switch Control button.

MobileCollect Wireless

MICRORIDGE

**Measurement Collection Specialists
Connect Any Gage into Any Software**

Read Switch Setup



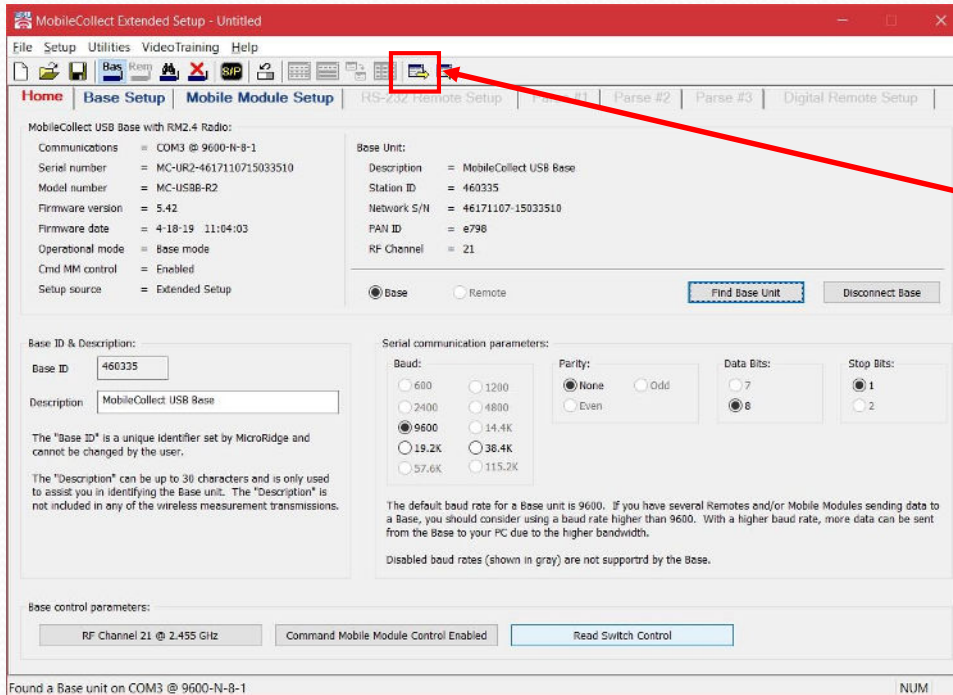
1. Click on the “Front Left” selection
2. Select “Read Channel 1 CMM gage”
3. Click OK

MobileCollect Wireless

MICRORIDGE

**Measurement Collection Specialists
Connect Any Gage into Any Software**

Update the Base



- Click this icon to send the setup to the Base receiver



- Message will display confirming Base receiver was updated

MobileCollect Wireless

MICRO RIDGE

**Measurement Collection Specialists
Connect Any Gage into Any Software**

Activate Command mode



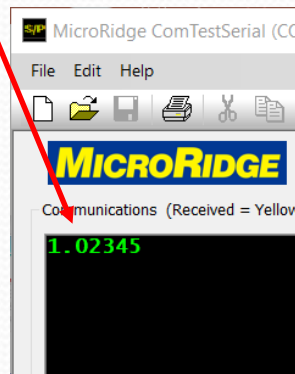
- The CMM must be in active mode before sending the first command
 - Press the Setup button to activate the CMM
 - The green LED will flash continuously indicating it is ready to use

MobileCollect Wireless

MICRORIDGE

*Measurement Collection Specialists
Connect Any Gage into Any Software*

Test Setup



- Connect footswitch to input on Base receiver
- Open ComTestSerial test program
- Press footswitch to request reading from gage
- If measurement on gage appears in ComTestSerial, your setup is complete

MobileCollect Wireless

MICRO RIDGE

*Measurement Collection Specialists
Connect Any Gage into Any Software*

Tech Support

- Contact MicroRidge if you need assistance setting up your Command Mobile Module transmitter and foot switch
 - Office hours:
 - Monday - Friday
 - 8am – 4:30pm Pacific Time
 - Tech Support:
 - 541-593-1656
 - support@microridge.com

MobileCollect Wireless

MICRORIDGE

***Measurement Collection Specialists
Connect Any Gage into Any Software***