

+

o

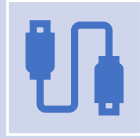
# MobileCollect Training

Add Numeric Channel ID using Extended Setup



**MICRO**RIDGE

# Items required to complete this process



The USB driver and MobileCollect Extended Setup program have been installed on the setup computer.



The Base receiver must be connected to the setup computer.



All transmitters have been paired to the Base receiver



The Module ID of each transmitter paired to this receiver is available. This information is needed to complete this process.

# Compatible Transmitters

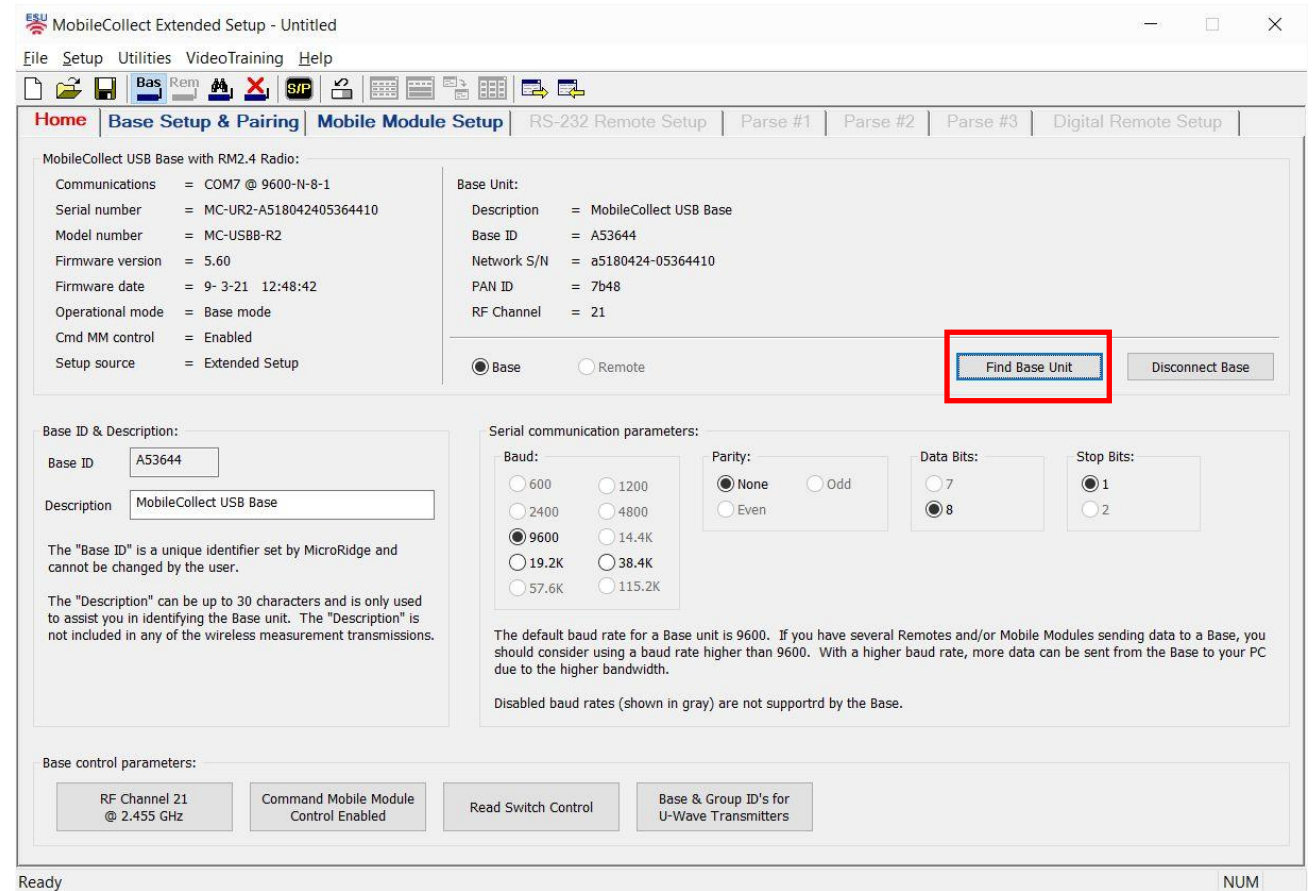
The steps to add a Channel ID to the data packet is the same for all MobileCollect Wireless transmitter models:

- Mini Mobile Module
- RS-232 Mobile Module
- Command Mobile Module
- Digital Remote
- RS-232 Remote



# Find Base

- Open the Extended Setup program
- Press the “Find Base” button on the Home tab



# Base Setup tab

- Click on the “Base Setup & Pairing” tab
- Lines 1-30 are used to add the channel ID to each transmitter data packet
- Do not use the first line, “Global Channel”, it will add a “00” channel ID to each data packet

MobileCollect Extended Setup - Untitled

File Setup Utilities VideoTraining Help

Home **Base Setup & Pairing** Mobile Module Setup RS-232 Remote Setup Parse #1 Parse #2 Parse #3 Digital Remote Setup

Chan	Chan Active	Module Type & Pairing	Module ID	Meas Format	Text Field	Send to Host Computer Before (B) or After (A) Measurement										
						Delimiter Char	Chan 00 to 30	Chan A to Z	Text Field	Module ID	Module Label	Units	Battery Status	Signal Strength	TxD Attempt	EOP Char
Global	Yes	All		Pass		{Comma}										{CR}
1	Yes	Mobile		Pass		{Comma}										{CR}
2	Yes	Mobile		Pass		{Comma}										{CR}
3	Yes	Mobile		Pass		{Comma}										{CR}
4	Yes	Mobile		Pass		{Comma}										{CR}
5	Yes	Mobile		Pass		{Comma}										{CR}
6	Yes	Mobile		Pass		{Comma}										{CR}
7	Yes	Mobile		Pass		{Comma}										{CR}
8	Yes	Mobile		Pass		{Comma}										{CR}
9	Yes	Mobile		Pass		{Comma}										{CR}
10	Yes	Mobile		Pass		{Comma}										{CR}
11	No	Mobile		Pass		{Comma}										{CR}
12	No	Mobile		Pass		{Comma}										{CR}
13	No	Mobile		Pass		{Comma}										{CR}
14	No	Mobile		Pass		{Comma}										{CR}
15	No	Mobile		Pass		{Comma}										{CR}
16	No	Mobile		Pass		{Comma}										{CR}

Disabled channels and cells that cannot be modified are displayed with a light-red background. To move rows, select rows in Chan column and drag with left mouse button pressed.

Output formats:  
Use settings in above grid [v] Reset Grid

Sample output for current channel (Measurement value = 3.5795):  
3.5795{CR}

Instructions for channel grid:  
Channel active or inactive. If you set this field to "No", no measurement data will be accepted for this channel and you will not be able to modify any of the fields for this channel.  
N (No) = Channel is inactive and no measurement data will be accepted.  
Y (Yes) = Channel is active and data will be accepted.

Ready NUM

# Transmitter Type

- The “Module Type & Pairing” column is used to select the transmitter type.
- The default transmitter is “Mobile” for Mobile Modules
- There are five transmitter types listed in the bottom left corner
- Select the channel row and enter the transmitter type letter if not the default Mobile Module

MobileCollect Extended Setup - Untitled

File Setup Utilities VideoTraining Help

Home Base Setup & Pairing Mobile Module Setup RS-232 Remote Setup Parse #1 Parse #2 Parse #3 Digital Remote Setup

Chan	Chan Active	Module Type & Pairing	Module ID	Meas Format	Text Field	Send to Host Computer Before (B) or After (A) Measurement										
						Delimiter Char	Chan 00 to 30	Chan A to Z	Text Field	Module ID	Module Label	Units	Battery Status	Signal Strength	TxD Attempt	EOP Char
Global	Yes	All		Pass		{Comma}										{CR}
1	Yes	Mobile		Pass		{Comma}										{CR}
2	Yes	Mobile		Pass		{Comma}										{CR}
3	Yes	RS-232 Rem		Pass		{Comma}										{CR}
4	Yes	Mobile		Pass		{Comma}										{CR}
5	Yes	Mobile		Pass		{Comma}										{CR}
6	Yes	Mobile		Pass		{Comma}										{CR}
7	Yes	Mobile		Pass		{Comma}										{CR}
8	Yes	Mobile		Pass		{Comma}										{CR}
9	Yes	Mobile		Pass		{Comma}										{CR}
10	Yes	Mobile		Pass		{Comma}										{CR}
11	No	Mobile		Pass		{Comma}										{CR}
12	No	Mobile		Pass		{Comma}										{CR}
13	No	Mobile		Pass		{Comma}										{CR}
14	No	Mobile		Pass		{Comma}										{CR}
15	No	Mobile		Pass		{Comma}										{CR}
16	No	Mobile		Pass		{Comma}										{CR}

Disabled channels and cells that cannot be modified are displayed with a light-red background. To move rows, select rows in Chan column and drag with left mouse button pressed.

Output formats:

Sample output for current channel (Measurement value = 3.5795):

Instructions for channel grid:

Type of module associated with the channel.

M = Mobile Module (Mini, Digital, Command, RS-232 & Universal).

C = CDI Indicator with Embedded RM2.4 Radio Module.

D = Digital Gage Remote.

R = RS-232 Remote.

U = U-Wave Transmitter.

To do a Quick Pair of a Mobile Module (M), CDI Indicator (C) or U-Wave Transmitter (U), select the Module Type (M, C or U) and then double-click the Module Type in the Module Type column.

The RS-232 and Digital Remotes do not support the Quick Pair procedure.

Found a Base unit on COM7 @ 9600-N-8-1 NUM

# Channel 1

- Right click in the line 1 box of the “Module ID” column
- This will highlight the box in yellow and bring up the ID Selection box – shown on following page

MobileCollect Extended Setup - Untitled

File Setup Utilities VideoTraining Help

Home Base Setup & Pairing Mobile Module Setup RS-232 Remote Setup Parse #1 Parse #2 Parse #3 Digital Remote Setup

Chan	Chan Active	Module Type & Pairing	Module ID	Meas Format	Text Field	Send to Host Computer Before (B) or After (A) Measurement										
						Delimiter Char	Chan 00 to 30	Chan A to Z	Text Field	Module ID	Module Label	Units	Battery Status	Signal Strength	TxD Attempt	EOP Char
Global	Yes	All		Pass		{Comma}										{CR}
1	Yes	Mobile		Pass		{Comma}										{CR}
2	Yes	Mobile		Pass		{Comma}										{CR}
3	Yes	Mobile		Pass		{Comma}										{CR}
4	Yes	Mobile		Pass		{Comma}										{CR}
5	Yes	Mobile		Pass		{Comma}										{CR}
6	Yes	Mobile		Pass		{Comma}										{CR}
7	Yes	Mobile		Pass		{Comma}										{CR}
8	Yes	Mobile		Pass		{Comma}										{CR}
9	Yes	Mobile		Pass		{Comma}										{CR}
10	Yes	Mobile		Pass		{Comma}										{CR}
11	No	Mobile		Pass		{Comma}										{CR}
12	No	Mobile		Pass		{Comma}										{CR}
13	No	Mobile		Pass		{Comma}										{CR}
14	No	Mobile		Pass		{Comma}										{CR}
15	No	Mobile		Pass		{Comma}										{CR}
16	No	Mobile		Pass		{Comma}										{CR}

Disabled channels and cells that cannot be modified are displayed with a light-red background. To move rows, select rows in Chan column and drag with left mouse button pressed.

Output formats:  
Use settings in above grid [v] Reset Grid

Sample output for current channel (Measurement value = 3.5795):  
3.5795{CR}

Instructions for channel grid:  
Name of the Mobile Module associated with this channel.  
Right-click in this cell to access the ID's of the Mobile Modules that have been configured on this computer.

Ready NUM

# ID Selection

- The information shown in the ID Selection box is based on the transmitter type on that line
- Line 1 has “Mobile”, so it shows the ID of every Mobile Module transmitter ever paired with that Base receiver

The screenshot shows the 'MobileCollect Extended Setup - Untitled' application window. The 'Mobile Module Setup' tab is active, displaying a table with columns: Chan, Chan Active, Module Type & Pairing, Module ID, Meas Format, Text Field, Delimiter Char, Chan 00 to 30, Chan A to Z, Text Field, Module ID, Module Label, Units, Battery Status, Signal Strength, TxD Attempt, and EOP Char. Line 1 is highlighted in yellow, showing 'Mobile' as the transmitter type.

The 'Mobile Module ID Selection' dialog box is open, showing a table of module IDs and their details. The table has columns: Module ID, Module Type, Module Label, Description, RF Chan, and Serial Number. The dialog also includes instructions on how to select or delete module IDs and a checkbox for 'Enable multiple selections'.

Module ID	Module Type	Module Label	Description	RF Chan	Serial Number
084712	MobileCollect Mini	084712	Mini Mobile Module	21	MC-M3R-0817100515471210
283917	MobileCollect Mini	283917	Mini Mobile Module	21	MC-M3R-2818030706391710
284716	MobileCollect Mini	KMS004	Mini Mobile Module	21	MC-M3R-2817100706471610
2E1951	MobileCollect Mini	2E1951	Mini Mobile Module	21	MC-M3R-2E17101705195110
385932	MobileCollect Mini	385932	Mini Mobile Module	21	MC-M3R-3818030806593210
404327	MobileCollect Mini	404327	Mini Mobile Module	21	MC-M3R-4018100815432710
453220	MobileCollect Command	453220	Command Mobile Module	21	MC-C2R-4518122015322010
681340	MobileCollect Mini	681340	Mini Mobile Module	21	MC-M3R-6818062910134010
8E481F	MobileCollect Mini	Caliper	Mini Mobile Module	21	MC-XMM-8E0000151C481F01
A14220	MobileCollect Mini	A14220	Mini Mobile Module	21	MC-M3R-A117053015422010
A51997	MobileCollect Command	A51997	Command Mobile Module	21	MC-CMM-A500001388199701
A75416	MobileCollect Command	A75416	Command Mobile Module	21	MC-C2R-A717100711541610
AA0910	MobileCollect Mini	AA0910	Mini Mobile Module	21	MC-M3R-AA18042006091010
D43557	MobileCollect Mini	D43557	Mini Mobile Module	21	MC-M3R-D418030606355710
E25020	MobileCollect Mini	E25020	Mini Mobile Module	21	MC-M3R-E219010213502010
EA2303	MobileCollect Mini	EA2303	Mini Mobile Module	21	MC-M3R-EA17101206230310
FB2739	MobileCollect Mini	FB2739	Mini Mobile Module	21	MC-M3R-FB18072309273910
FC37C2	MobileCollect RS-232	FC37C2	RS-232 Mobile Module	21	MC-RMM-FC0000124037C201



# Select ID

- Click on the Module ID of the transmitter to be linked to channel 1
- Press the “Select” button in the bottom right corner
- Note: contact MicroRidge for assistance if you did not record the Module ID when pairing each transmitter

The screenshot shows the 'MobileCollect Extended Setup - Untitled' application window. The 'Mobile Module Setup' tab is active, displaying a table with columns for Channel, Chan Active, Module Type & Pairing, Module ID, Meas Format, Text Field, Delimiter Char, Chan 00 to 30, Chan A to Z, Text Field, Module ID, Module Label, Units, Battery Status, Signal Strength, TxD Attempt, and EOP Char. The 'Module ID' column for channel 1 is highlighted in yellow.

A 'Mobile Module ID Selection' dialog box is open, showing a list of modules with columns for Module ID, Module Type, Module Label, Description, RF Chan, and Serial Number. The module with ID '2E1951' is selected. The dialog also includes instructions on how to select and delete modules, and a 'Select' button highlighted with a red box.

Module ID	Module Type	Module Label	Description	RF Chan	Serial Number
084712	MobileCollect Mini	084712	Mini Mobile Module	21	MC-M3R-0817100515471210
283917	MobileCollect Mini	283917	Mini Mobile Module	21	MC-M3R-2818030706391710
284716	MobileCollect Mini	KMS004	Mini Mobile Module	21	MC-M3R-2817100706471610
2E1951	MobileCollect Mini	2E1951	Mini Mobile Module	21	MC-M3R-2E17101705195110
385932	MobileCollect Mini	385932	Mini Mobile Module	21	MC-M3R-3818030806593210
404327	MobileCollect Mini	404327	Mini Mobile Module	21	MC-M3R-4018100815432710
453220	MobileCollect Command	453220	Command Mobile Module	21	MC-C2R-4518122015322010
681340	MobileCollect Mini	681340	Mini Mobile Module	21	MC-M3R-6818062910134010
8E481F	MobileCollect Mini	Caliper	Mini Mobile Module	21	MC-XMM-8E0000151C481F01
A14220	MobileCollect Mini	A14220	Mini Mobile Module	21	MC-M3R-A117053015422010
A51997	MobileCollect Command	A51997	Command Mobile Module	21	MC-CMM-A500001388199701
A75416	MobileCollect Command	A75416	Command Mobile Module	21	MC-C2R-A717100711541610
AA0910	MobileCollect Mini	AA0910	Mini Mobile Module	21	MC-M3R-AA18042006091010
D43557	MobileCollect Mini	D43557	Mini Mobile Module	21	MC-M3R-D418030606355710
E25020	MobileCollect Mini	E25020	Mini Mobile Module	21	MC-M3R-E219010213502010
EA2303	MobileCollect Mini	EA2303	Mini Mobile Module	21	MC-M3R-EA17101206230310
FB2739	MobileCollect Mini	FB2739	Mini Mobile Module	21	MC-M3R-FB18072309273910
FC37C2	MobileCollect RS-232	FC37C2	RS-232 Mobile Module	21	MC-RMM-FC0000124037C201

# Module ID added

- The Module ID for the channel 1 transmitter is displayed in the grid
- Repeat these steps to add the channel ID for each additional transmitter

MobileCollect Extended Setup - Untitled

File Setup Utilities VideoTraining Help

Home Base Setup & Pairing Mobile Module Setup RS-232 Remote Setup Parse #1 Parse #2 Parse #3 Digital Remote Setup

Chan	Chan Active	Module Type & Pairing	Module ID	Meas Format	Text Field	Send to Host Computer Before (B) or After (A) Measurement										
						Delimiter Char	Chan 00 to 30	Chan A to Z	Text Field	Module ID	Module Label	Units	Battery Status	Signal Strength	TxD Attempt	EOP Char
Global	Yes	All		Pass		{Comma}										{CR}
1	Yes	Mobile	2E1951	Pass		{Comma}										{CR}
2	Yes	Mobile		Pass		{Comma}										{CR}
3	Yes	Mobile		Pass		{Comma}										{CR}
4	Yes	Mobile		Pass		{Comma}										{CR}
5	Yes	Mobile		Pass		{Comma}										{CR}
6	Yes	Mobile		Pass		{Comma}										{CR}
7	Yes	Mobile		Pass		{Comma}										{CR}
8	Yes	Mobile		Pass		{Comma}										{CR}
9	Yes	Mobile		Pass		{Comma}										{CR}
10	Yes	Mobile		Pass		{Comma}										{CR}
11	No	Mobile		Pass		{Comma}										{CR}
12	No	Mobile		Pass		{Comma}										{CR}
13	No	Mobile		Pass		{Comma}										{CR}
14	No	Mobile		Pass		{Comma}										{CR}
15	No	Mobile		Pass		{Comma}										{CR}
16	No	Mobile		Pass		{Comma}										{CR}

Disabled channels and cells that cannot be modified are displayed with a light-red background. To move rows, select rows in Chan column and drag with left mouse button pressed.

Output formats: Use settings in above grid [Reset Grid]

Sample output for current channel (Measurement value = 3.5795): 3.5795{CR}

Instructions for channel grid:  
Name of the Mobile Module associated with this channel.  
Right-click in this cell to access the ID's of the Mobile Modules that have been configured on this computer.

Ready NUM

# All IDs added

- Once all the transmitter Module IDs have been added to the grid, the next step is to setup the channel ID
- The channel ID can be placed after or before the gage measurement in the data packet

MobileCollect Extended Setup - Untitled

File Setup Utilities VideoTraining Help

Home Base Setup & Pairing Mobile Module Setup RS-232 Remote Setup Parse #1 Parse #2 Parse #3 Digital Remote Setup

Chan	Chan Active	Module Type & Pairing	Module ID	Meas Format	Text Field	Send to Host Computer Before (B) or After (A) Measurement										
						Delimiter Char	Chan 00 to 30	Chan A to Z	Text Field	Module ID	Module Label	Units	Battery Status	Signal Strength	TxD Attempt	EOP Char
Global	Yes	All		Pass		{Comma}										{CR}
1	Yes	Mobile	2E1951	Pass		{Comma}										{CR}
2	Yes	Mobile	385932	Pass		{Comma}										{CR}
3	Yes	Mobile		Pass		{Comma}										{CR}
4	Yes	Mobile		Pass		{Comma}										{CR}
5	Yes	Mobile		Pass		{Comma}										{CR}
6	Yes	Mobile		Pass		{Comma}										{CR}
7	Yes	Mobile		Pass		{Comma}										{CR}
8	Yes	Mobile		Pass		{Comma}										{CR}
9	Yes	Mobile		Pass		{Comma}										{CR}
10	Yes	Mobile		Pass		{Comma}										{CR}
11	No	Mobile		Pass		{Comma}										{CR}
12	No	Mobile		Pass		{Comma}										{CR}
13	No	Mobile		Pass		{Comma}										{CR}
14	No	Mobile		Pass		{Comma}										{CR}
15	No	Mobile		Pass		{Comma}										{CR}
16	No	Mobile		Pass		{Comma}										{CR}

Disabled channels and cells that cannot be modified are displayed with a light-red background. To move rows, select rows in Chan column and drag with left mouse button pressed.

Output formats: Use settings in above grid [Reset Grid]

Sample output for current channel (Measurement value = 3.5795): 3.5795{CR}

Instructions for channel grid:  
Name of the Mobile Module associated with this channel.  
Right-click in this cell to access the ID's of the Mobile Modules that have been configured on this computer.

Ready NUM

# Add Channel ID

- To add a numeric channel ID, select the line 1 box in the “Chan 00 to 30” column
- Enter “A1” to place the channel ID “after” the measurement
- Enter “B1” to place the channel ID “before” the measurement

MobileCollect Extended Setup - Untitled

File Setup Utilities VideoTraining Help

Home Base Setup & Pairing Mobile Module Setup RS-232 Remote Setup Parse #1 Parse #2 Parse #3 Digital Remote Setup

Chan	Chan Active	Module Type & Pairing	Module ID	Meas Format	Text Field	Delimite Char	Send to Host Computer Before (B) or After (A) Measurement									
							Chan 00 to 30	Chan A to Z	Text Field	Module ID	Module Label	Units	Battery Status	Signal Strength	TxD Attempt	EOP Char
Global	Yes	All		Pass		{Comma										{CR}
1	Yes	Mobile	2E1951	Pass		{Comma	A1									{CR}
2	Yes	Mobile	385932	Pass		{Comma										{CR}
3	Yes	Mobile		Pass		{Comma										{CR}
4	Yes	Mobile		Pass		{Comma										{CR}
5	Yes	Mobile		Pass		{Comma										{CR}
6	Yes	Mobile		Pass		{Comma										{CR}
7	Yes	Mobile		Pass		{Comma										{CR}
8	Yes	Mobile		Pass		{Comma										{CR}
9	Yes	Mobile		Pass		{Comma										{CR}
10	Yes	Mobile		Pass		{Comma										{CR}
11	No	Mobile		Pass		{Comma										{CR}
12	No	Mobile		Pass		{Comma										{CR}
13	No	Mobile		Pass		{Comma										{CR}
14	No	Mobile		Pass		{Comma										{CR}
15	No	Mobile		Pass		{Comma										{CR}
16	No	Mobile		Pass		{Comma										{CR}

Disabled channels and cells that cannot be modified are displayed with a light-red background. To move rows, select rows in Chan column and drag with left mouse button pressed.

Output formats: Use settings in above grid [Reset Grid]

Sample output for current channel (Measurement value = 3.5795): 3.5795,01{CR}

Instructions for channel grid:  
Send the channel number as a 2 digit string (00 to 30). Channel 00 is used for the Global channel.  
You must specify if this item should be sent before (B) or after (A) the measurement. You also specify the order (1 to 7) the item is sent. The first item sent before the measurement would be B1, the second would be B2, etc. The first item sent after the measurement would be A1, the second would be A2, etc.

Ready NUM

# Output Formats

- The “Output formats” selector offers a quick way to apply a format to all lines
- Eliminates the need to do each line individually
- There are four predefined formats
- Note: Each selection will display a sample output to the right

MobileCollect Extended Setup - Untitled

File Setup Utilities VideoTraining Help

Home Base Setup & Pairing Mobile Module Setup RS-232 Remote Setup Parse #1 Parse #2 Parse #3 Digital Remote Setup

Chan	Chan Active	Module Type & Pairing	Module ID	Meas Format	Text Field	Send to Host Computer Before (B) or After (A) Measurement										
						Delimiter Char	Chan 00 to 30	Chan A to Z	Text Field	Module ID	Module Label	Units	Battery Status	Signal Strength	TxD Attempt	EOP Char
Global	Yes	All		Pass		{Comma}										{CR}
1	Yes	Mobile	2E1951	Pass		{Comma}	A1									{CR}
2	Yes	Mobile	385932	Pass		{Comma}										{CR}
3	Yes	Mobile		Pass		{Comma}										{CR}
4	Yes	Mobile		Pass		{Comma}										{CR}
5	Yes	Mobile		Pass		{Comma}										{CR}
6	Yes	Mobile		Pass		{Comma}										{CR}
7	Yes	Mobile		Pass		{Comma}										{CR}
8	Yes	Mobile		Pass		{Comma}										{CR}
9	Yes	Mobile		Pass		{Comma}										{CR}
10	Yes	Mobile		Pass		{Comma}										{CR}
11	No	Mobile		Pass		{Comma}										{CR}
12	No	Mobile		Pass		{Comma}										{CR}
13	No	Mobile		Pass		{Comma}										{CR}
14	No	Mobile		Pass		{Comma}										{CR}
15	No	Mobile		Pass		{Comma}										{CR}
16	No	Mobile		Pass		{Comma}										{CR}

Disabled channels and cells that cannot be modified are displayed with a light-red background. To move rows, select rows in Chan column and drag with left mouse button pressed.

Output formats:

Use settings in above grid (selected)  
 Use settings in above grid  
 Meas, Chan xx  
 Chan xx, Meas  
 Meas, Module ID  
 Meas, Chan xx, Module ID, Units, Battery, Signal, Attempts

Reset Grid

Sample output for current channel (Measurement value = 3.5795):

3.5795,01{CR}

for the Global channel.

You must specify if this item should be sent before (B) or after (A) the measurement. You also specify the order (1 to 7) the item is sent. The first item sent before the measurement would be B1, the second would be B2, etc. The first item sent after the measurement would be A1, the second would be A2, etc.

Ready NUM

# A1 in all columns

- Choose the “Meas, Chan xx” selection to automatically add “A1” to all lines in the “Chan 00 to 30” column

MobileCollect Extended Setup - Untitled

File Setup Utilities VideoTraining Help

Home Base Setup & Pairing Mobile Module Setup RS-232 Remote Setup Parse #1 Parse #2 Parse #3 Digital Remote Setup

Chan	Chan Active	Module Type & Pairing	Module ID	Meas Format	Text Field	Delimiter Char	Send to Host Computer Before (B) or After (A) Measurement									
							Chan 00 to 30	Chan A to Z	Text Field	Module ID	Module Label	Units	Battery Status	Signal Strength	TxD Attempt	EOP Char
Global	Yes	All		Right		{Comma}	A1									{CR}
1	Yes	Mobile	2E1951	Right		{Comma}	A1									{CR}
2	Yes	Mobile	385932	Right		{Comma}	A1									{CR}
3	Yes	Mobile		Right		{Comma}	A1									{CR}
4	Yes	Mobile		Right		{Comma}	A1									{CR}
5	Yes	Mobile		Right		{Comma}	A1									{CR}
6	Yes	Mobile		Right		{Comma}	A1									{CR}
7	Yes	Mobile		Right		{Comma}	A1									{CR}
8	Yes	Mobile		Right		{Comma}	A1									{CR}
9	Yes	Mobile		Right		{Comma}	A1									{CR}
10	Yes	Mobile		Right		{Comma}	A1									{CR}
11	No	Mobile		Right		{Comma}	A1									{CR}
12	No	Mobile		Right		{Comma}	A1									{CR}
13	No	Mobile		Right		{Comma}	A1									{CR}
14	No	Mobile		Right		{Comma}	A1									{CR}
15	No	Mobile		Right		{Comma}	A1									{CR}
16	No	Mobile		Right		{Comma}	A1									{CR}

Disabled channels and cells that cannot be modified are displayed with a light-red background. To move rows, select rows in Chan column and drag with left mouse button pressed.

Output formats: Meas, Chan xx [Reset Grid]

Sample output for current channel (Measurement value = 3.5795): 3.5795,01{CR}

Instructions for channel grid:  
Send the channel number as a 2 digit string (00 to 30). Channel 00 is used for the Global channel.  
This item can only be modified if the Output format = "Use settings in above grid".

Ready NUM

# Save Configuration

- To update the Base receiver with the new configuration, click on the spreadsheet icon with the arrow facing right
- When highlighted, this icon will show the text “Send the Base setup to the Base unit”



MobileCollect Extended Setup - Untitled

File Setup Utilities VideoTraining Help

Home Base Setup & Pairing Mobile Module Setup Send the Base setup to the Base unit #1 Parse #2 Parse #3 Digital Remote Setup

Chan	Chan Active	Module Type & Pairing	Module ID	Meas Format	Text Field	Send to Host Computer Before (B) or After (A) Measurement										
						Delimiter Char	Chan 00 to 30	Chan A to Z	Text Field	Module ID	Module Label	Units	Battery Status	Signal Strength	TxD Attempt	EOP Char
Global	Yes	All		Right		{Comma}	A1									{CR}
1	Yes	Mobile	2E1951	Right		{Comma}	A1									{CR}
2	Yes	Mobile	385932	Right		{Comma}	A1									{CR}
3	Yes	Mobile		Right		{Comma}	A1									{CR}
4	Yes	Mobile		Right		{Comma}	A1									{CR}
5	Yes	Mobile		Right		{Comma}	A1									{CR}
6	Yes	Mobile		Right		{Comma}	A1									{CR}
7	Yes	Mobile		Right		{Comma}	A1									{CR}
8	Yes	Mobile		Right		{Comma}	A1									{CR}
9	Yes	Mobile		Right		{Comma}	A1									{CR}
10	Yes	Mobile		Right		{Comma}	A1									{CR}
11	No	Mobile		Right		{Comma}	A1									{CR}
12	No	Mobile		Right		{Comma}	A1									{CR}
13	No	Mobile		Right		{Comma}	A1									{CR}
14	No	Mobile		Right		{Comma}	A1									{CR}
15	No	Mobile		Right		{Comma}	A1									{CR}
16	No	Mobile		Right		{Comma}	A1									{CR}

Disabled channels and cells that cannot be modified are displayed with a light-red background. To move rows, select rows in Chan column and drag with left mouse button pressed.

Output formats: Meas, Chan xx

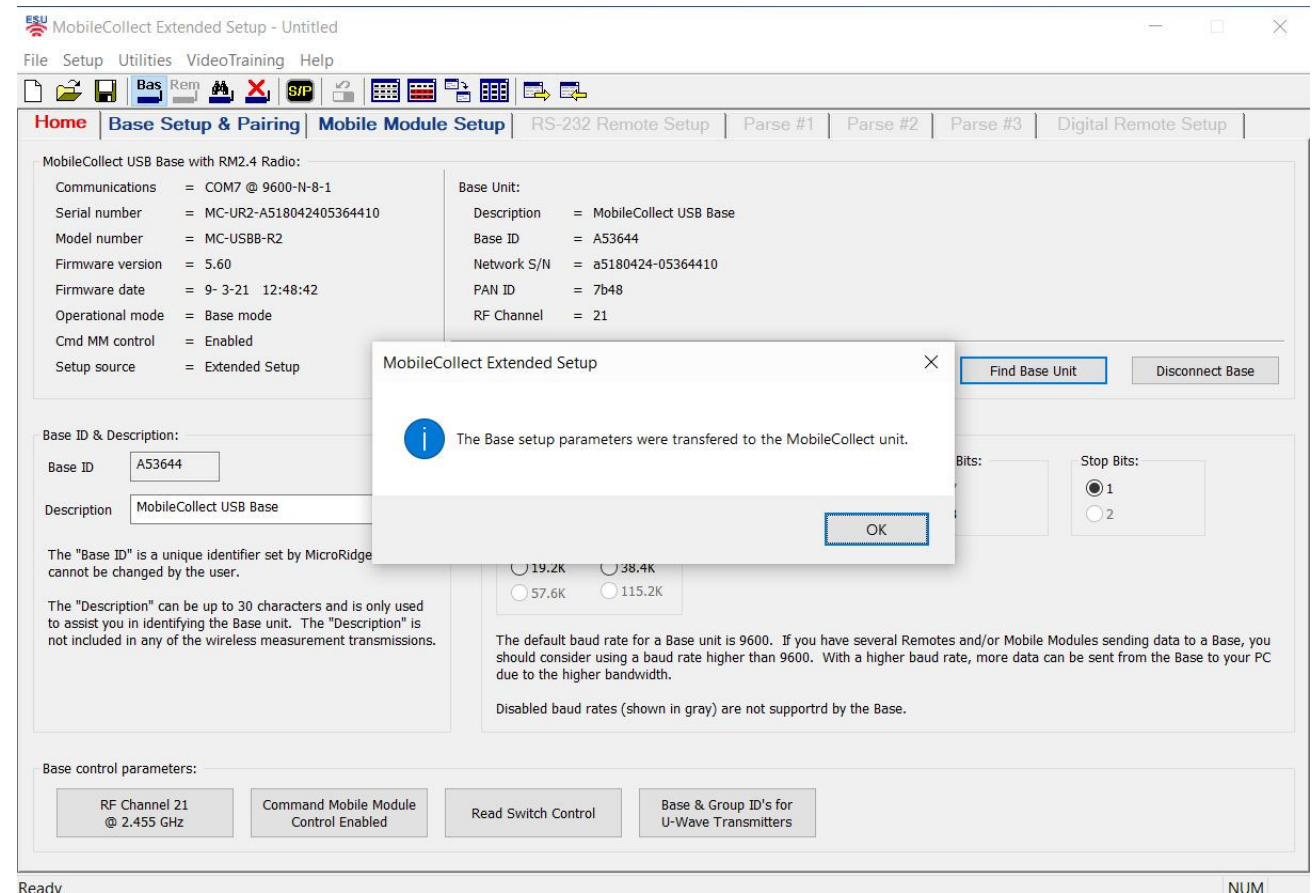
Sample output for current channel (Measurement value = 3.5795): 3.5795,01{CR}

Instructions for channel grid:  
Send the channel number as a 2 digit string (00 to 30). Channel 00 is used for the Global channel.  
This item can only be modified if the Output format = "Use settings in above grid".

Send the Base setup parameters to the Base unit NUM

# Update Complete

- This message will display once the Base update is completed
- Notice the “Home” tab is displayed behind the pop-up box
- When the “OK” button is pressed, the “Base Setup & Pairing” tab will be displayed





# Test Configuration

- The configuration update is now complete
- We recommend testing the configuration setup
- Click on the ComTestSerial icon to open the test page



MobileCollect Extended Setup - Untitled

File Setup Utilities VideoTraining Help

Home Base Setup & Pairing Load ComTestSerial Setup RS-232 Remote Setup Parse #1 Parse #2 Parse #3 Digital Remote Setup

Chan	Chan Active	Module Type & Pairing	Module ID	Meas Format	Text Field	Send to Host Computer Before (B) or After (A) Measurement										
						Delimiter Char	Chan 00 to 30	Chan A to Z	Text Field	Module ID	Module Label	Units	Battery Status	Signal Strength	TxD Attempt	EOP Char
Global	Yes	All		Right		{Comma}	A1									{CR}
1	Yes	Mobile	2E1951	Right		{Comma}	A1									{CR}
2	Yes	Mobile	385932	Right		{Comma}	A1									{CR}
3	Yes	Mobile		Right		{Comma}	A1									{CR}
4	Yes	Mobile		Right		{Comma}	A1									{CR}
5	Yes	Mobile		Right		{Comma}	A1									{CR}
6	Yes	Mobile		Right		{Comma}	A1									{CR}
7	Yes	Mobile		Right		{Comma}	A1									{CR}
8	Yes	Mobile		Right		{Comma}	A1									{CR}
9	Yes	Mobile		Right		{Comma}	A1									{CR}
10	Yes	Mobile		Right		{Comma}	A1									{CR}
11	No	Mobile		Right		{Comma}	A1									{CR}
12	No	Mobile		Right		{Comma}	A1									{CR}
13	No	Mobile		Right		{Comma}	A1									{CR}
14	No	Mobile		Right		{Comma}	A1									{CR}
15	No	Mobile		Right		{Comma}	A1									{CR}
16	No	Mobile		Right		{Comma}	A1									{CR}

Disabled channels and cells that cannot be modified are displayed with a light-red background. To move rows, select rows in Chan column and drag with left mouse button pressed.

Output formats: Meas, Chan xx

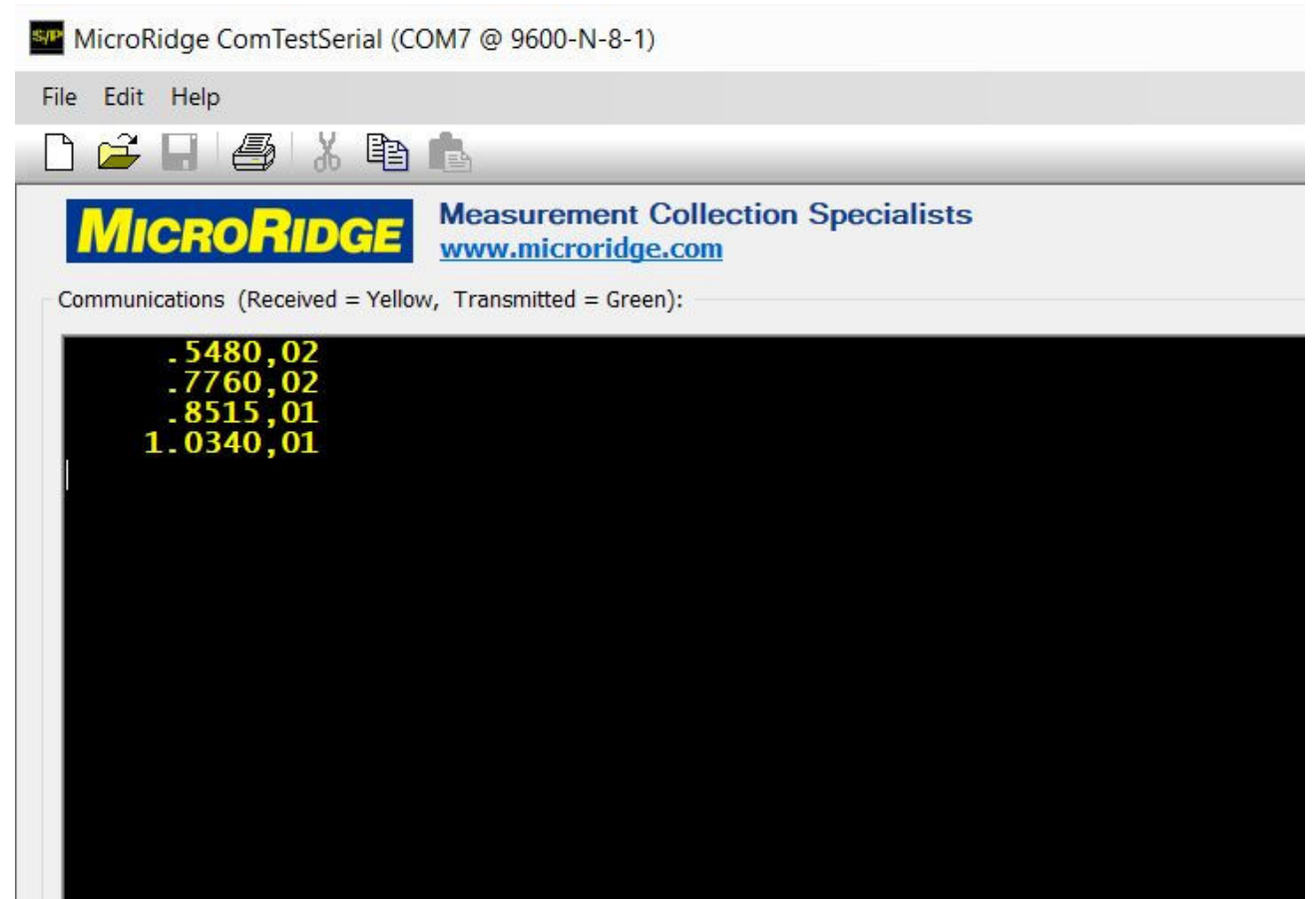
Sample output for current channel (Measurement value = 3.5795): 3.5795,01{CR}

Instructions for channel grid:  
Send the channel number as a 2 digit string (00 to 30). Channel 00 is used for the Global channel.  
This item can only be modified if the Output format = "Use settings in above grid".

Load serial communications test program NUM

# ComTestSerial

- Send measurements from each gage
- For an “A1” setup, the output format should display the measurement followed by the channel ID
- Close the test program if the output is working properly



# Process Completed

- Return to the Home tab and click on the “Disconnect Base” button
- Close the Extended Setup program.

MobileCollect Extended Setup - Untitled

File Setup Utilities VideoTraining Help

Home Base Setup & Pairing Mobile Module Setup RS-232 Remote Setup Parse #1 Parse #2 Parse #3 Digital Remote Setup

MobileCollect USB Base with RM2.4 Radio:

Communications = COM7 @ 9600-N-8-1  
Serial number = MC-UR2-A518042405364410  
Model number = MC-USBB-R2  
Firmware version = 5.60  
Firmware date = 9- 3-21 12:48:42  
Operational mode = Base mode  
Cmd MM control = Enabled  
Setup source = Extended Setup

Base Unit:  
Description = MobileCollect USB Base  
Base ID = A53644  
Network S/N = a5180424-05364410  
PAN ID = 7b48  
RF Channel = 21

Base  Remote

Find Base Unit Disconnect Base

Base ID & Description:  
Base ID: A53644  
Description: MobileCollect USB Base

The "Base ID" is a unique identifier set by MicroRidge and cannot be changed by the user.  
The "Description" can be up to 30 characters and is only used to assist you in identifying the Base unit. The "Description" is not included in any of the wireless measurement transmissions.

Serial communication parameters:  
Baud:  600  1200  2400  4800  9600  14.4K  19.2K  38.4K  57.6K  115.2K  
Parity:  None  Odd  Even  
Data Bits:  7  8  
Stop Bits:  1  2

The default baud rate for a Base unit is 9600. If you have several Remotes and/or Mobile Modules sending data to a Base, you should consider using a baud rate higher than 9600. With a higher baud rate, more data can be sent from the Base to your PC due to the higher bandwidth.  
Disabled baud rates (shown in gray) are not supported by the Base.

Base control parameters:  
RF Channel 21 @ 2.455 GHz  
Command Mobile Module Control Enabled  
Read Switch Control  
Base & Group ID's for U-Wave Transmitters

Ready NUM

# Technical Support

Contact MicroRidge if you require any assistance with this process

- Office hours: Mon-Fri, 8am - 4:30pm Pacific
- Phone: 541-593-1656
- Email: [support@microRidge.com](mailto:support@microRidge.com)